



SAZEH PAIDAR
modern construction and industrial material

LINKRAN

Tell: 021 - 88288551 - 3 **Fax:** 021 - 88288554

Mail: info@linkran.com info@sazehpaidar.com

Web: www.linkran.com www.sazehpaidar.com

Office: No5, Darya deadend, Nazerian Qomi St.
west Aliyali St. , Gisha , Tehran , Iran

Factory: No15, corner 6 Narges, Bo Ali Sina St
Baharestan Blvd , Shams Abad industrial town
km40 Qom highway

LINKRAN

International general catalogue



Manufacturer and supplier of new materials for the construction industry

- Elastomer insulation
- Modolar support and installation system
- Mechanical vibration isolator

The logo for LINKRAN, featuring the brand name in a white, stylized, sans-serif font on a green rectangular background.

LINKRAN

A photograph showing a modular support installation system for large pipes. The system consists of silver-colored metal brackets and beams mounted to a concrete ceiling. Several large, reddish-brown pipes are supported by the system. The background is a plain, light-colored wall.

Modular support & installation system

V2023

Application catalouge

قرعه کشی بزرگ لینکران

اطلاعات بیشتر در استوری بعدی



Iphone 13



About us

Since the establishment of Sazeh Paidar Elahieh Company, we have traveled a 16-year path with various ups and downs, the result of this journey is activity in more than 2000 projects in all corners of Iran. The trust of the employers is like a golden leaf in the work record of this company in these sweet partnerships. The passage of time is the best observer to prove our beliefs, which are based on principles such as honesty, compliance with professional ethics, customer orientation, continuous effort and empathy of personnel. During these years, by believing in these principles, we have always faced many challenges by paying attention to the needs of employers to solve them, and we have honestly taken steps along with employers in the path of the growth of projects, companies and finally our dear country.

We are always trying to make the best of today and tomorrow by using the experiences of yesterday, and this goal will not be possible except with constructive analysis, precise planning, continuous and responsible efforts.

The adherence of this company to the imagined policies is beyond the geographical, economic and commercial boundaries, and social responsibilities are an important part of these commitments. In the end, hoping for the prosperity and pride of Iran and the well-being of our dear compatriots, I would like to express my gratitude and appreciation to the big family of Linkran Industrial Group, who have grown and progressed and reached the current position with cooperation, effort and patience. This path continues and success in its continuation requires great effort and firm determination of all employees. Our intention is to register a good name and an eternal effect in the construction and facilities industry, which we will achieve by God's grace.

Mohammad Hashemi

در نمایشگاه تاسیسات با غرفه ما عکس سلفی بگیرین

عکستونو استوری کنین و بیج مارو تگ کنین



FOLLOW



بیج لینکران رو فالو داشته باشین

۳ پست آخر بیج رو لایک کنین



LINKRAN

گروه صنعتی لینکران

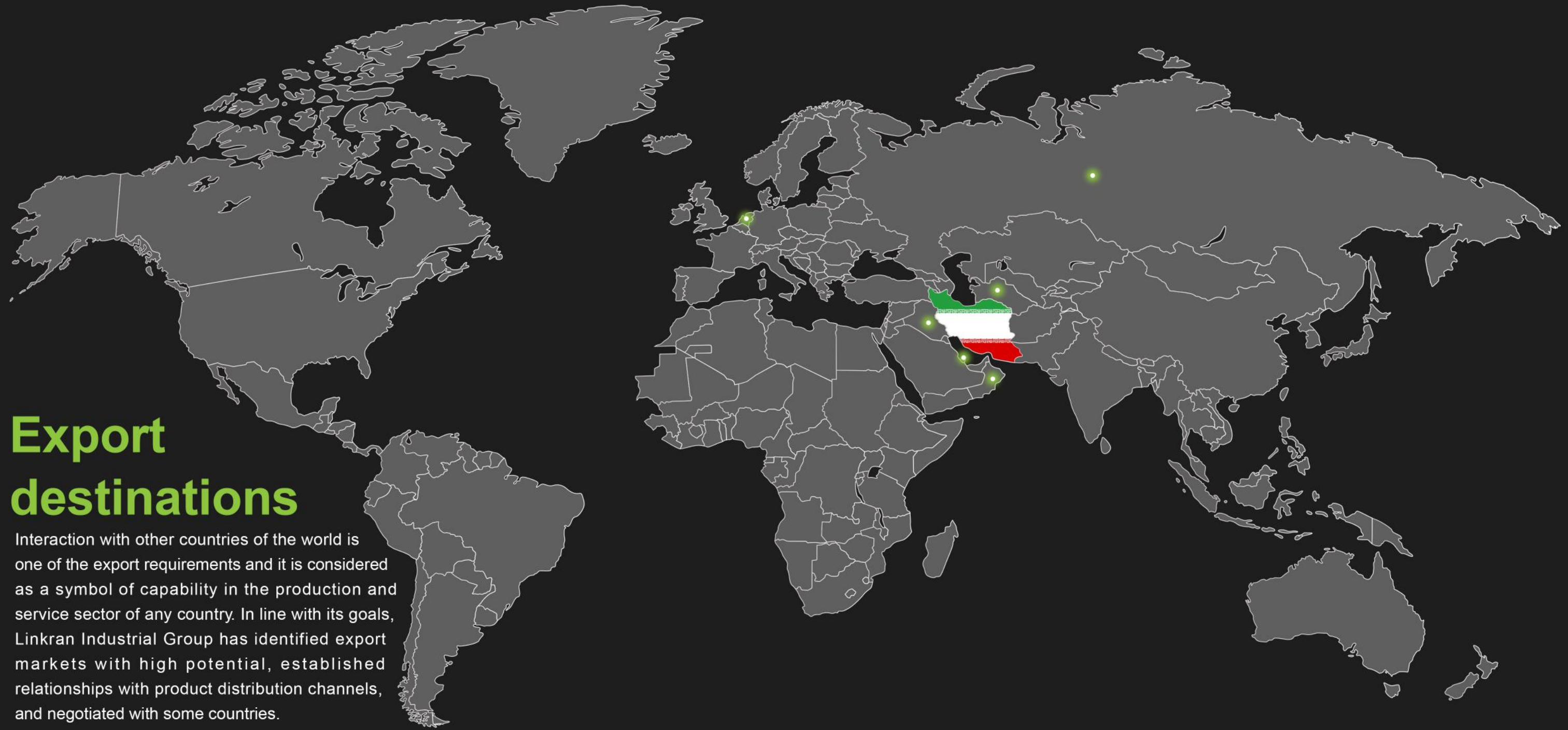


نگار شریفی

مدیر پروژه های بیمارستانی



سازه بایداربیه
ممالج نوین صنعت و ساختمان



Export destinations

Interaction with other countries of the world is one of the export requirements and it is considered as a symbol of capability in the production and service sector of any country. In line with its goals, Linkran Industrial Group has identified export markets with high potential, established relationships with product distribution channels, and negotiated with some countries.



Iraq



Turkmen



Oman



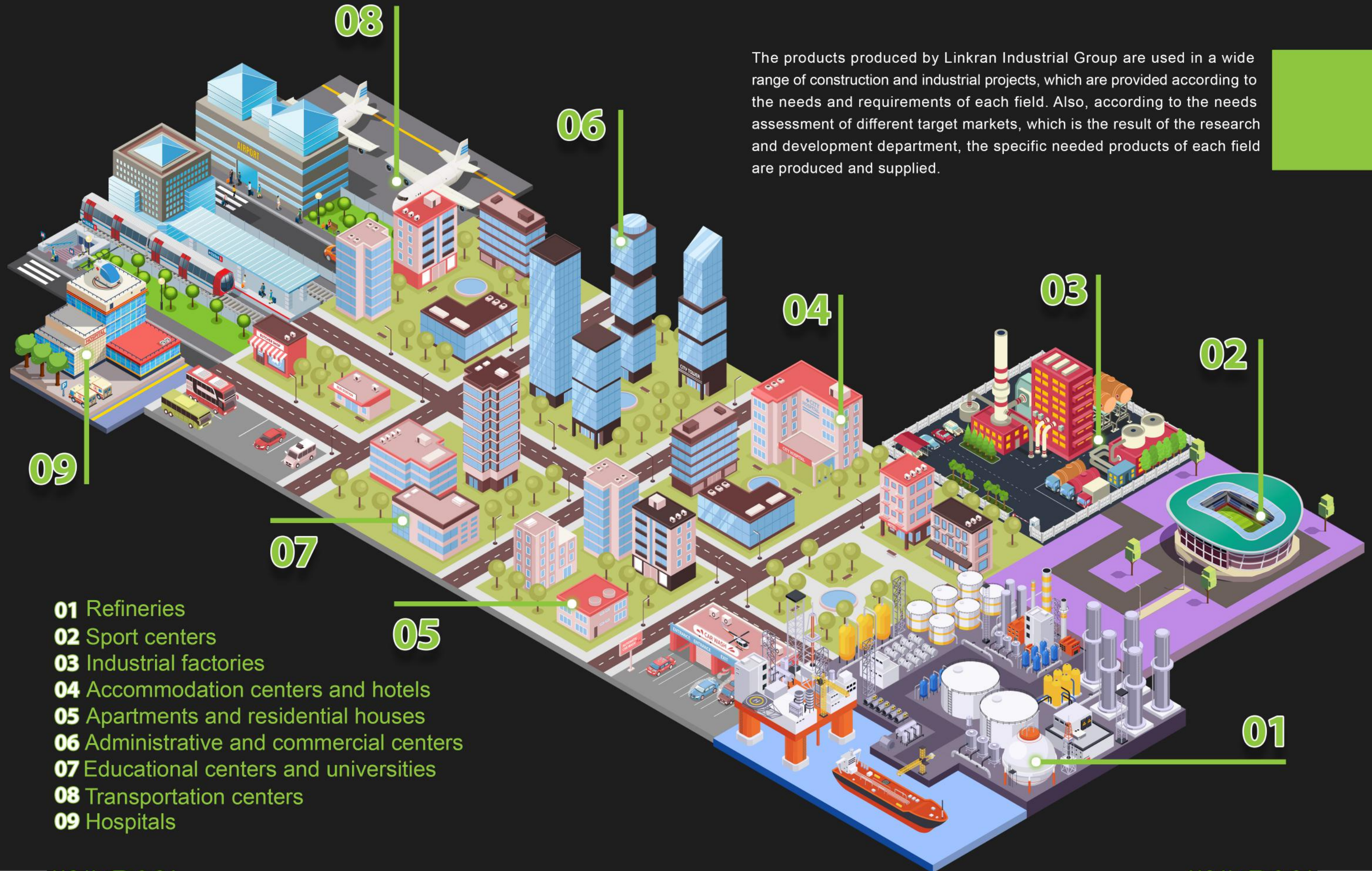
Qatar



Russia



Netherlands



The products produced by Linkran Industrial Group are used in a wide range of construction and industrial projects, which are provided according to the needs and requirements of each field. Also, according to the needs assessment of different target markets, which is the result of the research and development department, the specific needed products of each field are produced and supplied.

- 01 Refineries
- 02 Sport centers
- 03 Industrial factories
- 04 Accommodation centers and hotels
- 05 Apartments and residential houses
- 06 Administrative and commercial centers
- 07 Educational centers and universities
- 08 Transportation centers
- 09 Hospitals

Elastomeric insulation

Elastomeric insulation is one of the types of thermal, cold and sound (noise) insulation, which has a closed cell structure and is very suitable for insulating heating and cooling pipes, channels and air conditioning systems, utility devices, tanks, etc.

The use of this type of insulation has many advantages, such as optimizing energy consumption due to having an optimum heat transfer coefficient, preventing pipe corrosion and rusting, ease of installation and flexibility, adhesion and dyeability, preventing condensation, etc.

This type of insulation is based on (nitrile butadiene rubber NBR) or EPDM (thylene proylene monomer) as well as PVC (polyvinyl chloride) and is produced and marketed in three forms: tubular, roll and acoustic. This type of insulation has a great superiority over other thermal and cold insulation such as rock wool, glass wool, urethane, etc.



Increase system performance and productivity



Saving installation time and ease of implementation



Clean and environmentally friendly technology



Remarkable durability and longevity (life span)



Detailed engineering design and analysis



Cost reduction in system maintenance operations



Self-extinguishing against fire



energy saving



No use of toxic and allergenic



Very low water vapor absorption

Table of Elastomeric insulation comparison with traditional insulation

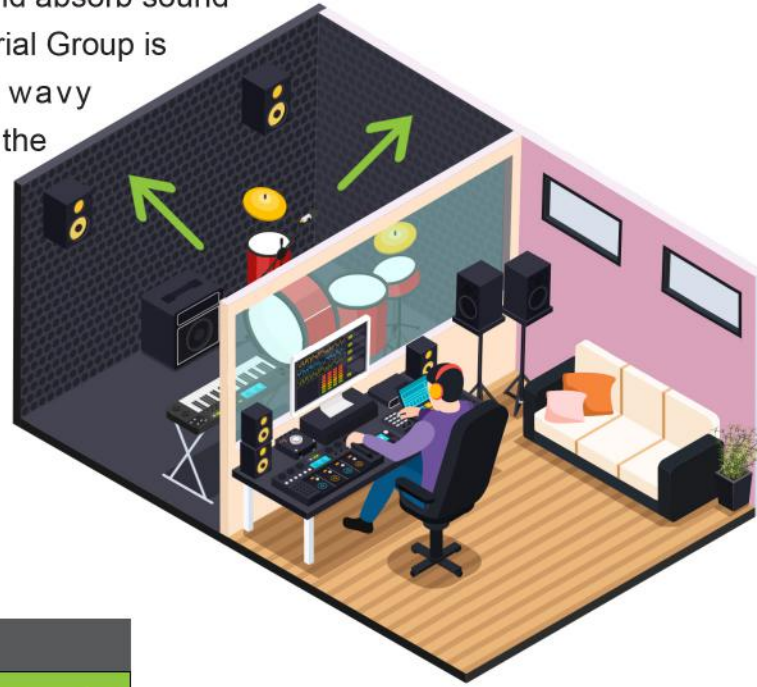
Technical Data	Elastomeric Foam	Glass Wool	Rock Wool	Polyurethane
Thermal Conductivity ratio in 0°(w/m.k)	0.032 – 0.036	0.041	0.039	0.032 – 0.036
Water Vapor diffusion resistance	$\mu \geq 10,000$	$\mu \geq 1$	$\mu \geq 1$	$\mu \geq 2,000$
Energy saving percentage	70% - 94%	Max.45%	Max.50%	70% - 94%
Reaction to fire	Slow burner & Self-extinguishing	Non-flammable	Non-flammable	Highly flammable
Risk of corrosion under insulation	No corrosion	Severe corrosion	Moderate corrosion	Low corrosion

Comparing table of Elastomeric insulation (NBR & EPDM)

Physical properties	NBR	EPDM
Material	Nitrile Butadiene Rubber	Ethylene Propylene Diene Monomer
Nominal hardness (IRHD)	60(5±)	60(5±)
Color	Black	Black with yellow spot
Tensile strength	$\geq 10 \text{ N/mm}^2$	$\geq 10 \text{ N/mm}^2$
Tensile strength to tearing	$\geq 300\%$	$\geq 300\%$
Operational temperature application range	Structural, Semi-Industrial	Industrial
Abrasion resistance	Medium to good	Medium to good
Resistance to mineral oils	Very well	Poor
Resistance to herbal oils	Very well	Medium to good
Resistance to gasoline	Very well	Poor
Resistance to aromatic and hydrocarbon compounds	Medium to good	Poor
Resistance to acids and bases	Very well	Very well
Resistance against fire	Medium to good	Medium to good
Resistance to moisture / Steam	Very well	Very well
Resistance to sunlight and UV	Medium to good	Very well
Thermal resistance	Very well	Very well

Sound insulation

This type of insulation is used to control and absorb sound waves. Sound insulation of Linkran Industrial Group is produced in two forms: simple and wavy (egg comb). The performance of reducing the sound level in these insulators is different according to the frequency of the sound source.



Sound insulation			
Insulation thickness	mm	13 Egg comb	13 Egg comb
Dimensions	m	1x8	1x8



Acoustic room

Installation requirements

Insulation glue

To connect the elastomeric insulators of Linkran Industrial Group to each other or to different surfaces such as the surface of channels, tanks, pipes, walls, etc., special glue for elastomeric insulation of Linkran Industrial Group is used. This type of glue is designed and produced in such a way that its use does not cause corrosion on the surface of elastomeric insulation.

This type of glue has the necessary compatibility with elastomeric insulation in terms of thermal tolerance. The special insulation glue of Linkran Industrial Group is produced in metal cans of one and three liters.

IGM



Elastomer sealing tape

This type of sealant is used for sealing the length of tubular insulation, rolls and end-to-end joints of elastomeric insulation. The sealing tape of Linkran Industrial Group is produced in various widths and thicknesses from elastomeric insulating material and in the form of threaded adhesive back.



IRT



Aluminum sealing tape

This type of sealing tape is used for sealing the length of tubular insulation, rolls and covering end-to-end joints of elastomeric insulation with aluminum coating. Also, for places where elastomeric insulation is located in the vicinity of moisture, steam, chemicals, oil, direct sunlight, etc., the aluminum sealing tape of Linkran Industrial Group is used. This product is made of reinforced aluminum and in the form of adhesive back.



IAT



Canvas sealing tape

This type of sealing tape is used for sealing the length of tubular insulation, rolls and covering end-to-end joints of elastomeric insulation. Also, this sealing tape is used for places where elastomeric insulation is in the vicinity of moisture, steam, chemicals, oil, direct sunlight, etc., and more tensile strength is required.



ITT



Mechanical vibration isolator

Nowadays most modern buildings are equipped with mechanical devices such as air conditioning systems, which create vibrations, shocks and noise. The purpose of using mechanical vibration isolator is to reduce the transmission of vibration and noise caused by mechanical equipment to the structure of industrial plants, residential apartments and hospitals.



Detailed engineering design and analysis



Production based on order



Preventing the transmission of equipment vibrations to the



Reduce noise pollution



Increase system performance and productivity



Remarkable durability and longevity (life span)



Cost reduction in system maintenance operations



Saving installation time and ease of implementation

Spring vibration isolator

Linkran spring vibration isolator are produced in three types: plate, spring hanger and embraced (in the form of single spring, two spring and four spring), which are used to reduce the transmission of noise, shock and vibration produced by mechanical and industrial equipment. They are used as pumps, cooling towers, chillers, boilers and compressors. It is also recommended to use these types of vibration isolator to absorb fluctuating loads with different frequencies and lateral loads entering the structure.

Free standing vibration isolator

Linkran plate spring isolators are designed to dampen low frequency vibrations in air ducts, fans, chillers and HVAC equipment. The steel spring of these vibration isolators is designed with a suitable ratio between the outer diameter and height. Welding is not used in the connection of the spring coil and the lower plate of the Lincoln plate spring vibration isolator, because in case of welding, tensions are created in the welding areas and lead to the failure of the springs. In the assembly of this type of vibration isolator, parts and materials including special spring housing, steel plate and polymer pads are used, which increases durability, strength and flexibility. The maximum deflection value of these vibration isolator is determined based on the equipment round. This product is not recommended for lateral loads, and according to the table below it is produced in two types to withstand different loads.



Plate spring vibration isolator light load

Code: VSN
Design load range: 20 - 100 kgf

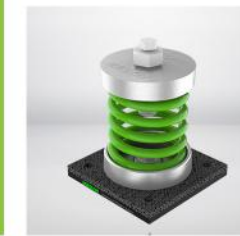
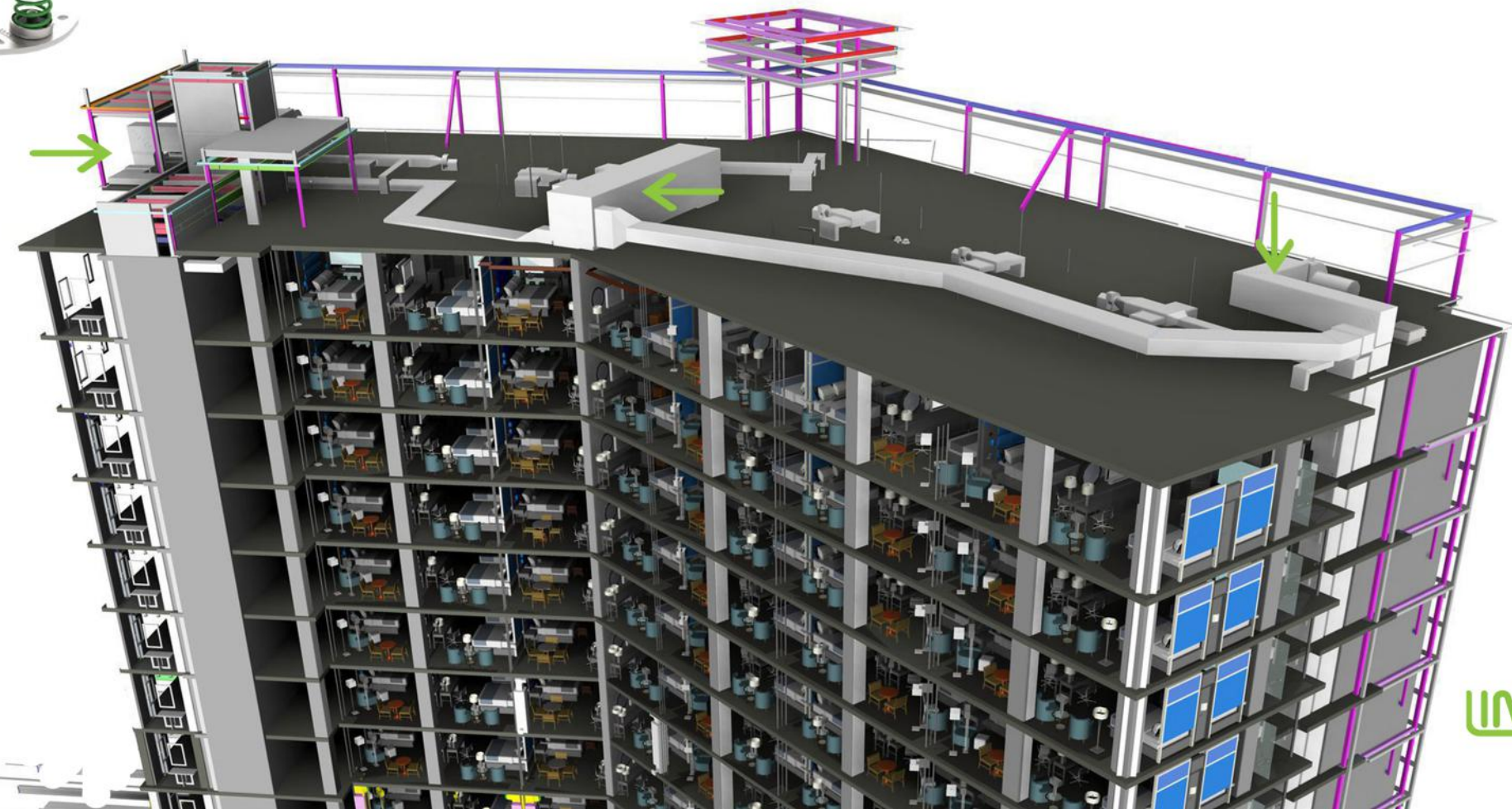


Plate spring vibration isolator heavy load

Code: VSC
Design load range: 100 - 800kgf



LINKRAN



Sina Amouzgar

Sales expert of
energy and industrial unit

Fixed and movable pipe clamp

Linkran pipe clamps are used to install various types of pipes, including pipes of cooling and heating systems, sprinklers, hot and cold water, and horizontal and vertical pipe lines according to the size of the pipe.

By using insulated clamps, it is possible to prevent direct metal-to-metal contact when connecting the pipe to the support structure and the transmission of vibration and sound.

<p>Round air duct clamp with single hanging</p>  <p>CRD</p>	<p>Round bend U-bolt pipe clamp</p>  <p>CUB</p>	<p>Grip strap pipe clamp</p>  <p>CGS</p>	<p>Insulated pipe clamp steel</p>  <p>CMI</p>	<p>Sprinkler pipe hanger</p>  <p>CSH</p>	<p>Clevis pipe hanger</p>  <p>CCH</p>	<p>Short pipe strap with rubber cover</p>  <p>CSS</p>	<p>Two screw pipe clamp with rubber cover</p>  <p>CST</p>		
<p>Heavy duty fixed point pipe clamp</p>  <p>CFP</p>	<p>Insulated sliding frame</p>  <p>CCS</p>	<p>Heavy duty tall base industrial sliding frame</p>  <p>CFS</p>	<p>Heavy duty industrial sliding frame</p>  <p>CHS</p>	<p>Round air duct clamp</p>  <p>CTD</p>	<p>Heavy duty U-based pipe clamp with rubber cover</p>  <p>CBP</p>	<p>Polymer pipe clamp with rubber cover</p>  <p>CPW</p>	<p>Insulated pipe clamp polymer</p>  <p>CPI</p>		
				<p>Small slider pipe clamp base</p>  <p>CKS.0100</p>	<p>Large slider pipe clamp base</p>  <p>CKS.0350</p>	<p>Small slider pipe clamp</p>  <p>CKA</p>	<p>Large slider pipe clamp</p>  <p>CKB</p>	<p>Wall sewer pipe clamp</p>  <p>CPR</p>	<p>Ceiling sewer pipe clamp</p>  <p>CPC</p>

Waffle anchor trapezoidal connection

The possibility of standard installation of energy and fluid carrying facilities in structural constructions is of particular importance due to the variety of structures in industry and construction. This segment provides the possibility of basic and standard installation of facility supports under the waffle roof. The adaptation of the muscular cross-section of the waffle roof and the segment in terms of engineering guarantees the necessary resistance against the considered forces. Problems such as the presence of reinforcement bars in the waffle structure, the impossibility of installing the anchor in the standard and recommended conditions of its manufacturer, and the direct non-compliance of the thickness and geometric conditions of the waffle roof with the limiting parameters in the anchor, have been appropriately solved through the design, engineering, production and application of the segment.



FWS.4012



Anchor channel

Planning and control in advancing the goals of construction, launch and operation of different phases of the project saves time, increases the quality of execution and the durability of the equipment. The anchor channel part is designed, engineered and produced to withstand the design forces and the possibility of installing the installation equipment and the project view. This segment is placed and installed during the concrete pouring operation in the project; After concreting, it is buried in the concrete structure. After the completion of the main concrete structure operations, the part is prepared by removing the embedded elastomeric foam filler, a standard rail free of concrete and masonry particles for installing T-bolts inside it.

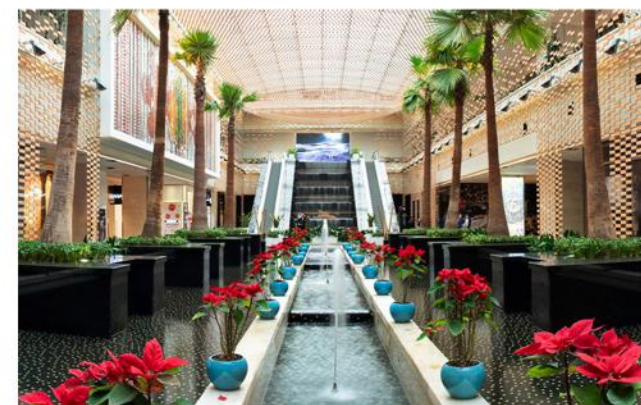
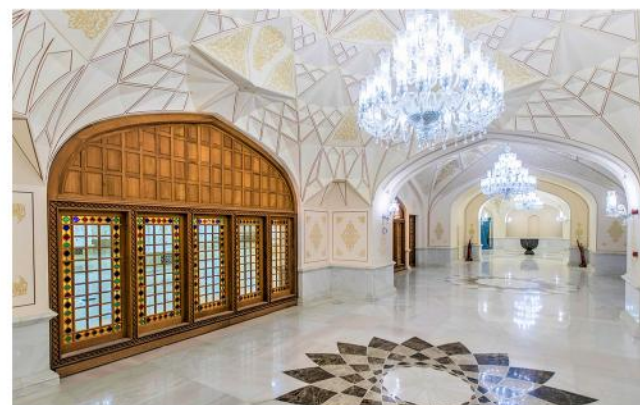


PAC.5436





Iran Mall

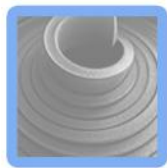






- Elastomeric insulation
- Mechanical vibration isolator
- Modular support




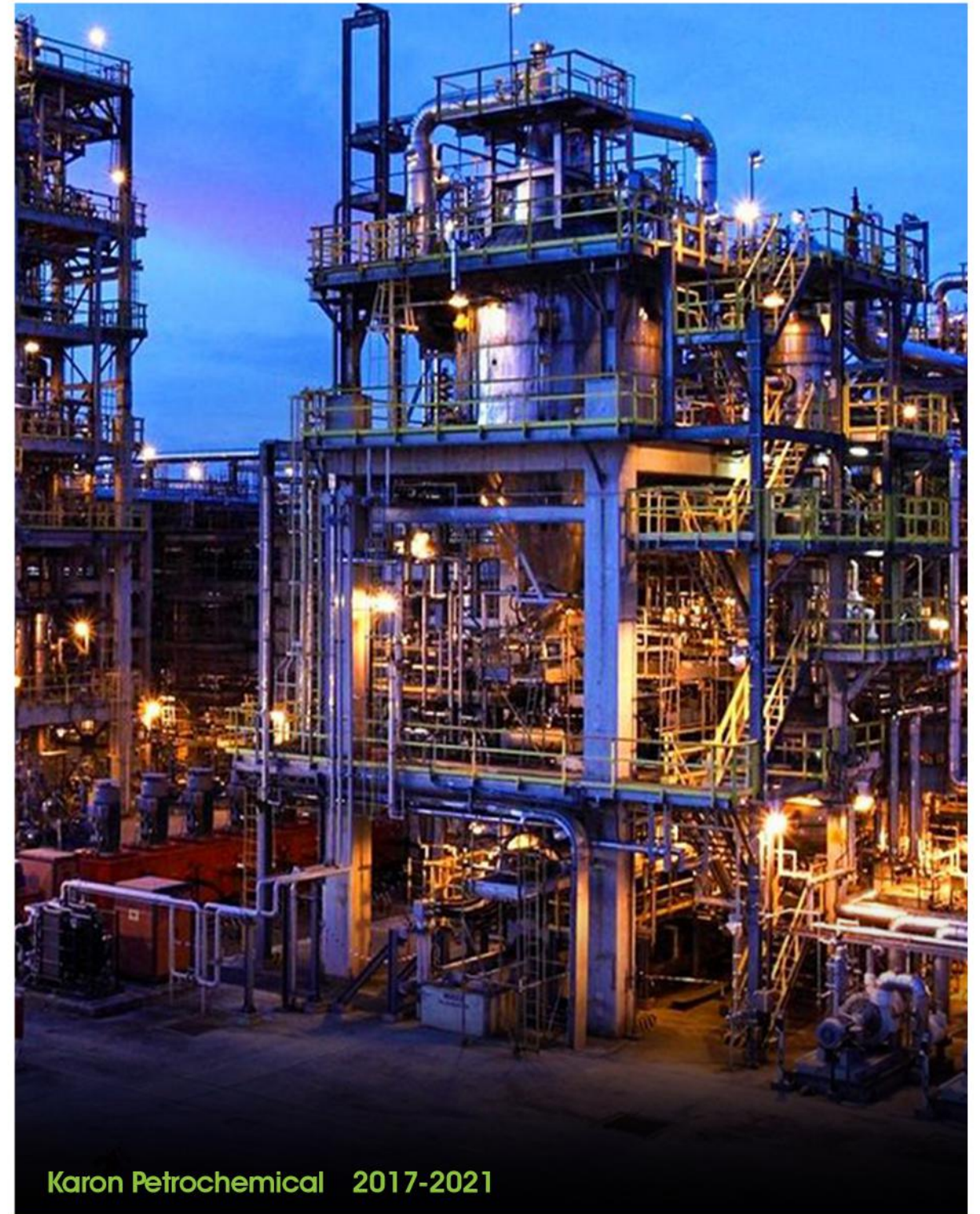
Iran Polymer and Petrochemical Research Institute 2017



Elastomeric insulation 


Mechanical vibration isolator 


Modular support 




Karon Petrochemical 2017-2021



Elastomeric insulation 

Mechanical vibration isolator 

Modular support 



- 01 Refineries
- 02 Sport centers
- 03 Industrial factories
- 04 Accommodation centers and hotels
- 05 Apartments and residential houses
- 06 Administrative and commercial centers
- 07 Educational centers and universities
- 08 Transportation centers
- 09 Hospitals

The products produced by Linkran Industrial Group are used in a wide range of construction and industrial projects, which are provided according to the needs and requirements of each field. Also, according to the needs assessment of different target markets, which is the result of the research and development department, the specific needed products of each field are produced and supplied.







Eco
Friendly
Linkran





LINKRAN

Tell: 021 - 88289551 - 3 Fax: 021 - 88288554
Mail: info@linkran.com info@sazehpaidar.com
Web: www.linkran.com www.sazehpaidar.com
Office: No5, Darya deadend, Nazarian Qomi St,
west Aliyali St - Gisha - Tehran - Iran
Factory: No15, corner 4 Nargos, Bo Ali Sina St
Baharestan Blvd, Shams Abad industrial town
km40 Qom highway



LINKRAN
International general catalogue



Manufacture and supplier of new materials for the construction industry
• Electrical insulation • Mullion support and installation systems • Mechanical vibration isolator

LINKRAN

گروه صنعتی لینکران

عایق الاستومری

آنتی باکتریال آنتی میکروبیال

برای پروژة های بیمارستانی



LINKRAN
گروه صنعتی لینکران

عایق الاستومری
آنتی باکتریال
آنتی میکروبیال
برای پروژه های بیمارستانی



LINKRAN
گروه صنعتی لینکران

عایق الاستومری
آنتی باکتریال
آنتی میکروبیال
برای پروژه های بیمارستانی



LINKRAN
گروه صنعتی لینکران

عایق الاستومری
آنتی باکتریال
آنتی میکروبیال
برای پروژه های بیمارستانی



Services



Sales engineering
Engineering technology
Quality control
Logistics and transportation
Executive technical
Research and development



Sales engineering

- Full introduction of goods and services
- Combining product technical information and project requirements
- Offer products according to customer needs



Technical Engineering

- Holding technical presentation meetings
- Designing technical details and making installation plans
- Design and production of custom parts



Quality Control

- Providing quality products with continuously inspection
- Performing periodical tests and obtaining valid certificates to ensure customers' confidence



Transportation

- Delivery of the requested material in minimum time
- Packaging products with high quality to reduce cargo damage
- Supplying products for projects in all parts of Iran



Executive technical

- Training to install products according to standards
- Supervising the installation and implementation of contracting
- Site testing for Anchorage system



Research and Development

- Research, deep understanding of the market and understanding of customer needs
- Monitoring of new products and improvement of previous products
- Efforts to reduce production costs and finally the price of goods

About linkran industrial group

- 01 CEO's speech
- 02 About us
- 03 History
- 04 Organizational chart
- 05 Managers
- 08 Strategy and goals
- 09 Statistical chart
- 10 Eco friendly linkran

Services of linkran industrial group

- 11 Linkran services
- 12 Export

Introducing the products of linkran

- 13 Products
- 14 Linkran in city

Approval, Certificates, Confirmations

- 15 Achievements
- 17 Certificates

Catalouge of products

- 18 Elastomeric insulation
- 20 Thermal insulation
- 22 Sound insulation
- 23 Tubular insulation
- 24 Acoustic insulation
- 25 Inspire insulation
- 26 Installation requirements
- 27 Vibration isolator
- 30 Rubber mechanical vibration
- 30 Light duty rubber vibration isolator
- 30 Hole rubber hanger
- 30 Restrained elastomeric vibration isolator
- 31 Spring vibration isolator
- 31 Free staneeing vibration isolator
- 32 Restrained spting vibration isolator
- 32 Spring hanger vibration isolator
- 33 Modular support and installation system
- 35 Type C
- 36 Type G
- 37 Type B
- 38 Anchorage system
- 38 Beam clamp
- 40 Fixed and movable pipe clamp
- 41 Channel flange profile, corner and clip
- 41 Accessories
- 42 Waffle anchor trapezoidal connection
- 42 Anchor channel

Cooperation with companies

- 43 Flaghsip project
- 49 Projects

Exhibitions

- 61 Exhibitions

Gallery

- 66 Gallery

CONTENTS

LINKRAN

گروه صنعتی لینکران

شرکت دانش بنیان سازه پایدار الهیه

تولید کننده مصالح نوین صنعت و ساختمان

◀ عایق الاستومری

◀ سیستم ساپورت و نصب تاسیسات

◀ لوزه گیر مکانیکی

۳ - ۸۸۲۸۸۵۵۱ - ۰۲۱



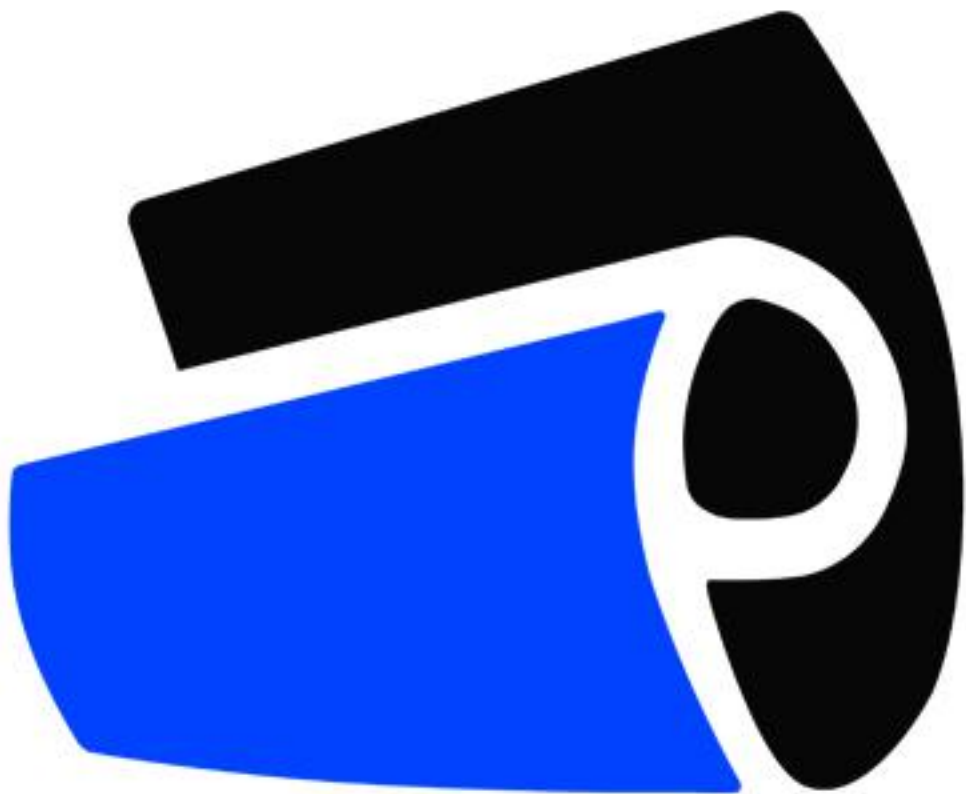
@carsflex

@arsflex

A 3D rendered logo for '@arsflex' on a grey background. The '@' symbol is a thick, multi-layered ring. The letters 'arsflex' are in a sans-serif font, also rendered in a thick, 3D style. The letter 'x' is colored blue, while the rest are grey. A blue square is positioned below the 'x'. A horizontal bar runs along the bottom of the letters, ending in a blue square under the 'x'.

@arsflex

@arsflex



Parsflex



Parsflex

LINKRAN



Sales Manager

Mehrnaz
Ganji

LINKRAN

A circular portrait of a man with a beard and mustache, wearing a dark suit jacket over a light-colored collared shirt. He is smiling slightly. The portrait is set against a white background within a circular frame.

**Shayan
Alizadeh**

Sales Manager



**Pump Restrained Spring
Vibration Isolator
CIB Inertia Base Support**



**Chiller & AHU
Restrained Spring
Vibration Isolator Support**



LINKRAN



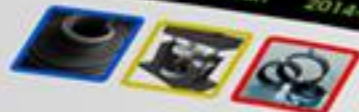
**Suction Pipe Restrained
Spring Vibration
Isolator Support**



**AHU Restrained
Spring Vibration
Isolator Support**



Iron Mall - Isfahan 2014-2022



- Electronic insulation
- Mechanical vibration isolator
- Modular support

UNKRAN



UNKRAN



تاریخ :

شماره :

پیوست :



دفتر: تهران، گیشا، خیابان علیایی غربی

خیابان ناظریان قمی، بن بست دریا، پلاک ۵

تلفن: ۰۲۱ - ۸۸۲۸۸۵۵۴

فکس: ۰۲۱ - ۸۸۲۸۸۵۵۱ - ۳

web: www.sazehpaidar.com

Mail: info@sazehpaidar.com



سازه یاپیدار ابیه
مصالح نوین صنعت و ساختمان

تاریخ:

شماره:

پیوست:





LINKRAN

LINKRAN

Strategy

- Requirement and implementation of interorganizational and environmental responsibilities
- Updating technical equipment and technologies
- Development and improvement of research system
- Maintaining organizational and individual values including order, creativity, meritocracy
- Valuing and strengthening interactive and team work

Goals

- Production of national products at the global standard quality level
- Monitoring the market in terms of assessing customer needs and increasing customer purchasing ability
- Continuous improvement of customer satisfaction and customer orientation
- Export development and access to global markets
- Planning to develop new products in order to increase fair competitiveness
- Education and training of human resources, creation of environment and entrepreneurship

Vision

- Improving the ability of non-governmental producers and contributing to the economic growth of the country
- Continuous improvement and organizational excellence in the country's construction and facilities industry
- Diligence towards local and environmental responsibilities
- Technology transfer, flourishing of creativity and localization of knowledge and its distribution in the industry
- Achieving ideal conditions in management principles, planning, operations and human resources

LINKRAN

LINKRAN

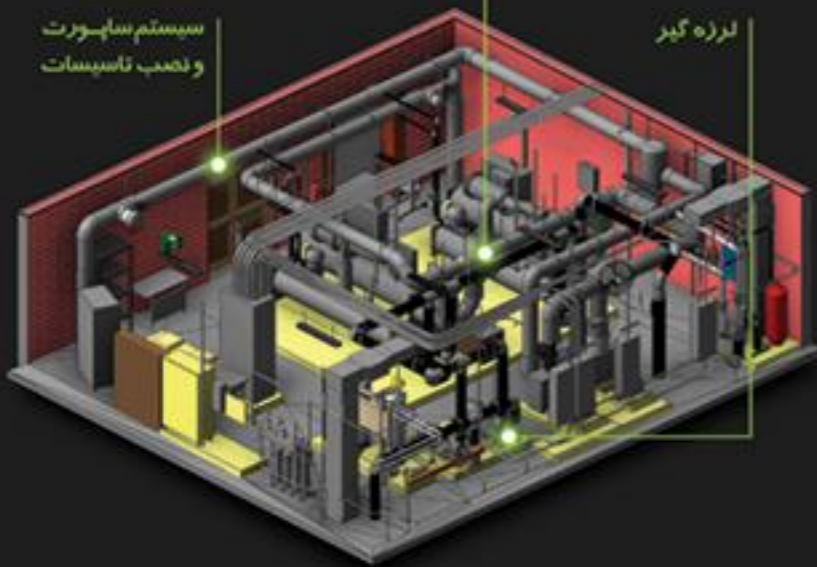
گروه صنعتی لینکران

تولید کننده و تامین کننده مصالح نوین صنعت و ساختمان

عایق الاستومری

لرزه گیر

سیستم سازه‌پورت
و نصب تاسیسات



Tell: 021- 88288551- 3 Fax: 021 - 88288554

Mail: info@linkran.com info@sazehpaidar.com

Web: www.linkran.com www.sazehpaidar.com

linkran_industrial_group linkran industrial group



دفتر تهران- گیشا
خیابان علیایی غربی
حصان باغریزان قفسی
پن بصرت درسا پلاک 5



کارخانه: گیشا- ۴۰ کیلومتر فم
شهرک صنعتی شمس آباد
بلوار بهارستان، خیابان بوعلی سینا
سپش سرگس ۶ پلاک ۱

LINKRAN



سازه پایدار
مصالح نوین صنعت و ساختمان



معرفی شرکت

شرکت تولیدی دانش بنیان سازه پایدار اقیه در ۱۳۸۵ با هدف تولید محصولات مورد نیاز کشور و پیشرفت در صنعت تاسیس گردیده و پس از سال ها فعالیت در عرصه صنعت و ساختمان و نمایندگی فروش برندهای خارجی، با انتقال تکنولوژی به کشور در زمینه تولید سیستم های سازه پورت و نصب تاسیسات، لرزه گیر های مکانیکی و عایق های الاستومری با نام تجاری لینکران شروع به فعالیت نمود. سایت تولیدی این شرکت در زمین به مساحت ۱۳۰۰۰ متر مربع در شهرک صنعتی شمس آباد معین به پیشرفته ترین دستگاه های روز دنیا می باشد که امکان تولید محصولات با کیفیت در سطح جهانی را فراهم آورده که دارای تاییده از مراکز معتبر همچون مرکز تحقیقات راه، مسکن و شهرسازی می باشند.

Modern Construction
Industrial Materials



Shoke Absorber

لرزه گیر

برخی از تجهیزات مکانیکی مورد استفاده در ساختمان ها مانند پمپ و کمپرسور و فن و ... ایجاد لرزش، نویز و سر و صدا می کنند. لرزه گیرهای مکانیکی یکی از مهم ترین تجهیزات دینامیکی هستند که علاوه بر کاهش یا حذف این ارتعاشات و نویزها و کاهش ضریبات مختلف سیال روی لوله ها و اتصالات نصب شده موجب افزایش طول عمر دستگاه ها نیز می گردند. این لرزه گیرها در انواع لرزه گیر لاستیکی و لرزه گیر فبری تولید می شوند و بنا بر رنج تحمل بار برای پروژه های مختلف طراحی می شوند.

Installation and Support Mechanical Facilities System

سایپورت و سیستم نصب تاسیسات

سیستم های سایپورت و نصب تاسیسات، سیستمی پیش ساخته چند عبور و نگهداری تاسیسات مکانیکی و الکتریکی هستند که جایگزین مناسبی برای سیستم سنتی، نبش و نودانی می باشند.

از جمله ویژگی های مثبت این سیستم می توان به سواردی چون عدم نیاز به جوشکاری، سوراختاری و رنگ کاری، مقاومت در برابر خوردگی و زنگ زدگی به واسطه روکش گالوانیزه، صرفه جویی در زمان نصب و سهولت اشرا کاهش هزینه های نگهداری و نصب، قابلیت طراحی مهندسی در شرایط بارگذاری دینامیکی و استاتیکی با ضریب اطمینان بالا قابلیت بارکافز و جابه جایی در راستاهای مختلف، قابلیت مونتاژ بدون آسیب به سازه و... پروفیل ها و اتصالات اینکرن در سه کلاس سنگ، نیمه سنگی و سنگین طراحی شده اند. برای مهار انواع لوله نیز می توان از انواع بست های لوله ثابت و متحرک استفاده نمود.

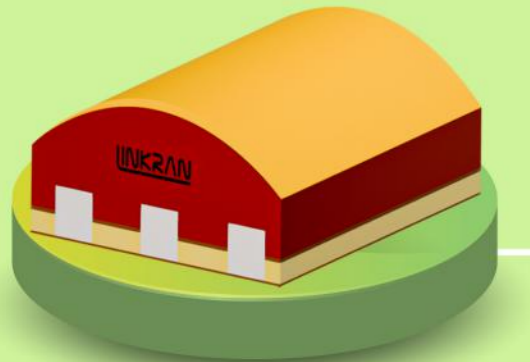
Elastomeric Insulation

عایق الاستومری

این محصولات برای جلوگیری از انتقال انرژی در صنایع و ساختمان ها برای عایق کاری لوله های سرمایشی و گرمایشی، کانال های هوا و سیستم های تهویه مطبوع دستگاه های تاسیساتی، مخازن و ... استفاده می شوند. ساختار عایق الاستومری به صورت سلول بسته و انعطاف پذیر است و برتری های زیادی نسبت به عایق های سنتی دارد به طور مثال مقاومت آن در برابر آلودگی رطوبت، بخار آب و حرارت بسیار بالاست. وزن بسیار سبکی دارند، مانع پدیده کنده شدن و زنگ زدگی لوله ها می شوند و دارای ضریب انتقال حرارتی معادل ۰.۰۳۶ (W/mh) می باشند و در بازه دمایی ۵۰- تا ۱۱۵+ قابل استفاده هستند. این محصولات در انواع رولی و لوله ای و به صورت ساده، پشت چسبدار و با روکش آلومینیوم عرضه می شوند.



مراحل تامین محصولات توسط لینکران



شرکت دانش بنیان سازه پایدار الهیه تولید کننده مصالح نوین ساختمانی

عایق الاستومری



سایورت و سیستم نصب تاسیسات



لرزه گیر مکانیکی



تلفن: ۰۲۱-۸۸۲۸۸۵۵۱-۳

تلفن همراه: ۰۲۱-۸۸۲۸۸۵۵۴

وبسایت: www.linkran.com

آدرس: تهران، گیشا، خیابان علیایی غربی، خیابان ناظریان قمی، بن بست دریا، پلاک ۵



LINKRAN

گروه صنعتی لینکران

شرکت دانش بنیان سازه پایدار الهیه
تولید کننده مصالح نوین ساختمانی

عایق الاستومری • ساپورت و سیستم نصب تاسیسات • لرزه گیر مکانیکی



تلفن: ۰۲۱-۸۸۲۸۸۵۵۱-۳

فکس: ۰۲۱-۸۸۲۸۸۵۵۴

وبسایت: www.linkran.com

آدرس: تهران، گیشا، خیابان علیالی غربی، خیابان ناظریان قمی، بن بست دریا، پلاک ۵



LINKRAN

گروه صنعتی لینکران

شرکت دانش بنیان سازه پایدار الهیه
تولید کننده مصالح نوین ساختمانی

عایق الاستومری
Elastomeric insulation

سپورت و نصب تاسیسات
Modular support installation

لرزه گیر مکانیکی
Vibration isolator



تلفن: ۰۲۱-۸۸۲۸۸۵۵۱-۳

فکس: ۰۲۱-۸۸۲۸۸۵۵۴

وبسایت: www.linkran.com

آدرس: تهران، گیشا، خیابان علیالی غربی، خیابان ناظریان قمی، بن بست دریا، پلاک ۵



LINKRAN

تولید کننده و تامین کننده مصالح نوین صنعتی و ساختمانی

گروه صنعتی لینکران

آرامش برلیان

کارشناس ارشد فنی، مسئول فنی شرکت سازنده پاشدار الپه

Modern Construction
Industrial Materials



www.linkran.com | (+98) 913 012 7420
a.berelian@linkran.com | (+21) 88288551-3

تهران، کوی نصر، خیابان ناطقیران قمی، سن صنعت دریا، پلاک 5



LINKRAN

تولید کننده و تامین کننده مصالح نوین صنعت و ساختمان

گروه صنعتی لینکران

فاطمه کرمی

کارشناس فروش بخش بیمارستانی شرکت سازه پایدار تهیه

Mob: (+۹۸) ۹۱۲ ۰۷۴ ۳۰۳۲

Tell: (+۲۱) ۸۸۲۸۸۵۵۱-۳

Web: www.linkran.com

Mail: f.karami@linkran.com



تهران، کیش، خیابان ناظریان قمی، بن بست دریا پلاک ۵

گروه صنعتی لینکران

فاطمه کریمی

کارشناس فروش بخش بازاریابی شرکت سازنده پایداریه

Mod: (+98) 912 074 3032

Tell: (+91) 88288551-3

Web: www.linkran.com

Mail: f.karimi@linkran.com

سنت دریا پلاک ۵



تهران - گوشه خیابان

LINKRAN

تولید کننده و تامین کننده مصالح نوین صنعت و ساختمان



Today, with the significant increase in greenhouse gas emissions, the alarming trend of climate change, and the increasing trend of the world's population, environmental protection is of great importance, which is essential for the future life of the planet Earth, and each person and group of a society should pay attention to this issue. Otherwise, it may lead to facing catastrophic and irreparable damages and consequences similar to global warming, ozone layer destruction, etc. in the future. Thus, most businesses are trying to prevent harmful environmental effects and future strategies to preserve the environment and resources so that less energy is consumed and carbon consumption is reduced.

Environmentally friendly products or green products refer to products that do not harm the environment during the production, use and disposal process. The concept of "green building" also refers to the construction of a structure that causes the least amount of damage to the environment and in which environmentally friendly technologies and materials are used. Linkran Industrial Group adheres to this as a social responsibility and all products manufactured by this company are environmentally friendly.



تولید کننده مصالح نوین ساختمان

Made in Iran 



◆ عایق الاستومری

◆ ساپورت و سیستم نصب تاسیسات

◆ لرزه گیر مکانیکی

LINKRAN



اول ایمنی بعد کار

first safety
then work

گروه صنعتی لینکران

LINKRAN



پارک ممنوع

No Parking

گروه صنعتی لینکران

LINKRAN



خطر سقوط مصالح

Falling Objects

گروه صنعتی لینکران

بیست و دومین نمایشگاه بین المللی

تاسیسات و سیستم های سرمایشی و گرمایشی و تهویه مطبوع

سالن خلیج فارس (44B)

غرفه A15

سالن ۶

غرفه D02



تهـ ۱۳ الی ۱۶ مهرماه ـ ران

◀ از ساعت ۸ الی ۱۵